



TOYOTA

2021 Tundra

2021 TUNDRA

Built to work. Born to play.

Toyota trucks have come to define the word “tough,” and the 2021 Toyota Tundra is no exception. With a powerful 5.7-liter V8 and overbuilt drivetrain, Tundras are built to haul. Whether you’re carrying lumber to the worksite or blasting through sand dunes, there’s a Tundra built just for you.



Limited CrewMax shown in Cavalry Blue with available running boards. Below left: 1794 Edition CrewMax shown in Smoked Mesquite. Below right: SR5 Double Cab shown in Silver Sky Metallic with available TRD Off-Road Package.



Payload includes the weight of occupants, cargo and options; limited by weight distribution.



CAPABILITY

Ready for the worksite and the weekend.

To say Tundra can tow is an understatement.¹ With features like staggered, outboard-mounted shocks and a standard Tow Package, Tundra has been SAE J2807-rated since 2010 — adopting the standard tow ratings as set by the Society of Automotive Engineers (SAE).



This image and below left: 1794 Edition CrewMax shown in Smoked Mesquite with available running boards.¹ Below right: Limited CrewMax shown in Cavalry Blue with available running boards.



38-gallon fuel tank

The workday doesn't stop for gas, and neither should you. With Tundra's available 38-gallon fuel tank — the largest in its segment² — you can rest assured that you've got the fuel you'll need for life's longer hauls.

Available 10,200-lb. towing capacity

Thanks to a heavy-duty TripleTech[®] frame that features an integrated tow hitch receiver that utilizes 12 high-strength bolts that attach directly into the frame, Tundra can flex its muscle to tow up to 10,200 lbs.¹



Available 1730-lb. payload capacity

Long or short, Tundra's open bed makes it easy to take on home improvement projects or last-minute getaways with ease. When properly equipped, Tundra has a payload capacity of up to 1730 lbs.³

PERFORMANCE

Where power meets potential.

Featuring a standard trailer brake controller,⁴² a two-piece drive shaft and a massive 10.5-in. ring gear, Tundra is ready to deliver more confidence every time you're behind the wheel. So whether you're towing, hauling or just heading home, you can rest assured that Tundra carries a payload of capability.



i-FORCE 5.7L V8

Tundra's 346-cu.-in. i-FORCE 5.7L V8 produces 381 hp and 401 lb.-ft. of torque. Pair it with a 6-speed automatic transmission with a standard Tow Package that includes TOW/HAUL Mode, and you've got one truck with heavy-duty towing capabilities.¹

Active Traction Control

Tundra 4WD models include an A-TRAC system that optimizes traction across the front and rear axles simultaneously, helping improve grip on low-traction surfaces. This also allows full use of the 2-speed transfer case, so you always have access to Tundra's incredible torque.



Automatic Limited-Slip Differential

Standard on all Tundras, Auto LSD⁴ applies braking individually to wheels with no traction. And unlike Traction Control, it doesn't cut engine power. This helps give you control and distributes power where it's most effective.

See numbered footnotes in Disclosures section.



SR5 Double Cab shown in Cement with available Trail Special Edition Package.



Trail Special Edition

The new Trail Special Edition is ready to help get you out there. Take on all the bumps on and off the road with beefy 18-in. alloy wheels wrapped with Michelin® all-terrain tires, while keeping all your gear in one place using its lockable bed storage boxes. So whether you're checking out a new campsite or heading to your favorite fishing spot, this Tundra's ready to go.



Rear power window

Let the outside in. Tundra CrewMax features a class-exclusive² power vertical-sliding rear window that lets you roll the entire rear glass all the way down with the simple press of a button.

UTILITY

The comfortable side of rugged.

The optimal blend of functionality and comfort, Tundra's spacious cabin gives you and your crew plenty of room to stretch out. An intuitive control layout puts what you need right where you need it, and available dual zone climate control helps ensure that everyone stays comfortable, no matter the ride.



Fold-up rear seats

To create even more usable cabin space, the rear seats in the Double Cab and CrewMax fold up, instead of down. This not only creates more room; it also makes it easier to load cargo.⁵

DESIGN

A breed apart.

Strong and intimidating, Tundra's muscular style is tough to beat. With a wide range of trims, there's one that will fit your own personal style. Tundra Nightshade Special Edition's unique sleek exterior treatment includes a darker look to keep you driving in style, even when the sun's out.



Limited CrewMax shown in Magnetic Gray Metallic with available Nightshade Edition Package.

1794 Edition interior

The 1794 Edition represents a leap forward in full-size truck luxury. Every part of the interior has been refined, from the premium perforated leather-trimmed seats with heated and ventilated front seats, to the wood-grain-style accents that add to its classic Western look.

Platinum interior

The Platinum model excels at transporting passengers in the lap of luxury. As you slide into the premium quilted and perforated leather-trimmed seating with heated and ventilated front seats, you'll appreciate a vehicle that's as comfortable as it is capable.





TRD-tuned FOX® suspension

Up front, TRD-tuned springs coil themselves around heavy-duty FOX® shocks. Tuned by TRD, these shocks feature a beefy 46-mm. piston and 11 bypass zones to help control the front wheels' extra 1.5 inches of travel. The rear gets two extra inches of travel, plus equally massive FOX® shocks with 12 bypass zones and 2.5-in. piggyback reservoirs.



Aluminum skid plate

Tough as nails and ¼-in. thick, the TRD aluminum skid plate helps armor the underside of Tundra TRD Pro. It looks good, too, with TRD lettering for extra attitude.



Leather-trimmed seating

Driver and front passenger seats branded with the TRD Pro logo, and leather-trimmed seating, let everyone ride in style. Red contrast stitching accents the dash, seats and armrests, adding just the right amount of flair. A TRD shift knob, TRD-branded floor liners¹⁰ and center-console emblem help complete this interior's bold, distinctive look.

TRD

Three letters. Endless dedication.

Hardened by the team at Toyota Racing Development, the 2021 Toyota Tundra TRD Pro is equipped to take you way off-road.⁶ Standard features include lightweight 18-in. forged-aluminum BBS^{®7} wheels, Rigid Industries^{®8} LED fog lights and a heritage-inspired front grille. It's one tough truck that will take you to places you never thought possible.



TRD Pro CrewMax shown in Lunar Rock.

See numbered footnotes in Disclosures section.

Amplify your drive.

Take advantage of smarter and convenient technologies designed to simplify your everyday life. From a suite of services that are there for you 24/7 to an immersive audio multimedia system, you can stay connected to your world.



Connected Services

Our available suite of Connected Services¹¹ provides added convenience and peace of mind.

- ✓ **Safety Connect[®]**
Emergency SOS assistance and 24/7 Toyota Roadside Assistance.^{12, 13}
- ✓ **Service Connect**
Get personalized maintenance updates and vehicle health reports.¹⁴
- ✓ **Remote Connect**
Start, lock/unlock your doors and more, using your compatible smart device.¹⁵
- ✓ **Wi-Fi Connect**
Turn your Toyota into a hotspot with 4G connectivity.¹⁶
- ✓ **Destination Assist**
24/7 live agent assistance to locate your next destination.¹⁷

To view included trial details, please visit toyota.com/connected-services.

Audio Multimedia

Make every drive more personal. By utilizing your vehicle's touchscreen display and audio multimedia capabilities, you'll always have access to what you want. Whether it's listening to your favorite playlist or finding the most scenic route to your destination, you'll enjoy the latest in connectivity and technologies that are all about you.



Apple CarPlay[®]

Bring along a familiar face. With Apple CarPlay^{®18} compatibility, you can use your compatible iPhone^{®19} with the audio multimedia system to get directions, make calls, send and receive messages, and listen to music — all while staying focused on your commute.



Android Auto[™]

Stay connected on the road. By pairing your compatible Android^{™20} phone with the audio multimedia system, Android Auto^{™21} lets you access your Google Assistant, get real-time traffic alerts, make and receive phone calls, listen to your favorite soundtrack and more.



SiriusXM[®] All Access 3-month trial subscription

Enjoy listening to what you want to hear. With SiriusXM^{®22} you get the deepest variety of ad-free music, more sports coverage than anywhere else, exclusive talk channels, every kind of comedy, and the most complete news coverage.²³



Amazon Alexa

Almost anywhere the road takes you, Amazon Alexa²⁴ connectivity follows. With a smartphone connection and the Toyota+Alexa app, all you have to do is ask Alexa to play music, listen to audiobooks, hear the news, check weather, control smart-home devices and more.



JBL[®]

Feel the difference and hear the truth. Designed specifically for Toyota, JBL^{®25} finely tunes each speaker to the interior of the vehicle. Just turn up the volume to hear the crisp, rich, vibrant sound come through.



TOYOTA SAFETY SENSE™ P (TSS-P)

Peace of mind comes standard.

Toyota Safety Sense™ P (TSS-P)²⁶ is a bundle of active safety features included on many new Toyota vehicles at no additional cost. TSS-P's comprehensive features create in-the-moment safety designed to help protect you and your passengers from harm.



Pre-Collision System with Pedestrian Detection²⁷



Dynamic Radar Cruise Control²⁸



Lane Departure Alert²⁹



Automatic High Beams³⁰

TUNDRA MODELS



SR

Available in Double Cab

Drivetrain/Powertrain

- ✓ 5.7-Liter Aluminum i-Force V8 DOHC 32-Valve with Dual Independent Variable Valve Timing with intelligence (VVT-i)
 - 381 hp @ 5600 rpm; 401 lb.-ft. @ 3600 rpm
 - Tow Package¹
- ✓ 6-speed Electronically Controlled automatic Transmission with intelligence (ECT-i)
- ✓ Rear-Wheel Drive (RWD) or 4WDemand part-time 4WD
- ✓ 13 city/17 hwy/15 combined EPA-est. mpg rating (4x2)³¹
13 city/17 hwy/14 combined EPA-est. mpg rating (4x4)³¹

Exterior Features

- ✓ 18-in. styled steel wheels
- ✓ Halogen headlights with LED accent lights
- ✓ Front and rear mudguards

Interior Features

- ✓ Integrated backup camera³²
- ✓ 4.2-in. Multi-Information Display (MID)
- ✓ 40/20/40 split fold-down front bench fabric seat
- ✓ Power windows and door locks

Audio Multimedia

- ✓ Audio with 7.0-in. touchscreen, and Apple CarPlay^{®18} & Android Auto^{™21} & Amazon Alexa²⁴ compatible
- ✓ Bluetooth^{®33} wireless technology
- ✓ USB media port³⁴ with charging capability

Safety/Convenience

- ✓ Toyota Safety Sense[™] P (TSS-P)²⁶ includes:
 - Pre-Collision System with Pedestrian Detection (PCS w/PD)²⁷
 - Lane Departure Alert (LDA) with Sway Warning System (SWS)²⁹
 - Automatic High Beams (AHB)³⁰
 - Dynamic Radar Cruise Control (DRCC)²⁸
- ✓ Star Safety System[™]

Options and Packages

- ✓ Work Truck Package
- ✓ Tow mirrors
- ✓ Running boards
- ✓ Deck rail system³⁵



SR5

Available in Double Cab and CrewMax

Drivetrain/Powertrain

- ✓ 5.7-Liter Aluminum i-Force V8 DOHC 32-Valve with Dual Independent Variable Valve Timing with intelligence (VVT-i)
 - 381 hp @ 5600 rpm; 401 lb.-ft. @ 3600 rpm
 - Tow Package¹
- ✓ 6-speed Electronically Controlled automatic Transmission with intelligence (ECT-i)
- ✓ Rear-Wheel Drive (RWD) or 4WDemand part-time 4WD
- ✓ 13 city/17 hwy/15 combined EPA-est. mpg rating (4x2)³¹
13 city/17 hwy/14 combined EPA-est. mpg rating (4x4)³¹

Exterior Features

- ✓ Gray grille with chrome surround
- ✓ 18-in. styled steel wheels
- ✓ Halogen headlights with LED accent lights
- ✓ Halogen fog lights
- ✓ Chrome front and rear bumper endcaps

Interior Features

- ✓ 40/20/40 split fold-down front bench fabric seat
- ✓ Integrated backup camera³²

Audio Multimedia

- ✓ Audio Plus with 8-in. high-resolution touchscreen, and Apple CarPlay^{®18} & Android Auto^{™21} & Amazon Alexa²⁴ compatible
- ✓ HD Radio^{™36} and SiriusXM^{®22}
- ✓ Bluetooth^{®33} wireless technology
- ✓ USB media port³⁴ with charging capability

Safety/Convenience

- ✓ Toyota Safety Sense[™] P (TSS-P)²⁶ includes:
 - Pre-Collision System with Pedestrian Detection (PCS w/PD)²⁷
 - Lane Departure Alert (LDA) with Sway Warning System (SWS)²⁹
 - Automatic High Beams (AHB)³⁰
 - Dynamic Radar Cruise Control (DRCC)²⁸
- ✓ Star Safety System[™]

Options and Packages

- ✓ SR5 Leather Package
- ✓ SR5 Upgrade Package
 - 38-gallon fuel tank
- ✓ Convenience Package
- ✓ TRD Off-Road Package
- ✓ SX Package
- ✓ 18-in. 5-spoke alloy wheels
- ✓ Premium Audio with Dynamic Navigation³⁷
- ✓ Tow mirrors
- ✓ Running boards
- ✓ Deck rail system³⁵



Limited

Available in Double Cab and CrewMax

Drivetrain/Powertrain

- ✓ 5.7-Liter Aluminum i-Force V8 DOHC 32-Valve with Dual Independent Variable Valve Timing with intelligence (VVT-i)
 - 381 hp @ 5600 rpm; 401 lb.-ft. @ 3600 rpm
 - Tow Package¹
- ✓ 6-speed Electronically Controlled automatic Transmission with intelligence (ECT-i)
- ✓ Rear-Wheel Drive (RWD) or 4WDemand part-time 4WD
- ✓ 13 city/17 hwy/15 combined EPA-est. mpg rating (4x2)³¹
13 city/17 hwy/14 combined EPA-est. mpg rating (4x4)³¹

Exterior Features

- ✓ Silver grille with chrome surround
- ✓ 20-in. split 5-spoke alloy wheels
- ✓ LED headlights with LED accent lights and LED fog lights
- ✓ Chrome heated outside mirrors
- ✓ Deck rail system³⁵
- ✓ 38-gallon fuel tank

Interior Features

- ✓ Smart Key System³⁸ on front doors with Push Button Start
- ✓ Leather-trimmed seats
- ✓ Heated front bucket seats with power driver and passenger seating
- ✓ Dual zone automatic climate control
- ✓ Power horizontal-sliding rear window (Double Cab models)
- ✓ Power vertical-sliding rear window (CrewMax models)

Audio Multimedia

- ✓ Premium Audio with Dynamic Navigation³⁷ and JBL^{®25} 8-in. high-resolution touchscreen, and Apple CarPlay^{®18} & Android Auto^{™21} & Amazon Alexa²⁴ compatible

Safety/Convenience

- ✓ Toyota Safety Sense[™] P (TSS-P)²⁶ includes:
 - Pre-Collision System with Pedestrian Detection (PCS w/PD)²⁷
 - Lane Departure Alert (LDA) with Sway Warning System (SWS)²⁹
 - Automatic High Beams (AHB)³⁰
 - Dynamic Radar Cruise Control (DRCC)²⁸
- ✓ Star Safety System[™]

Options and Packages

- ✓ Limited Premium Package
- ✓ TRD Off-Road Package
- ✓ Tow mirrors
- ✓ Running boards
- ✓ Power tilt/slide moonroof with sliding sunshade (CrewMax only)

TUNDRA MODELS



Platinum

Available in CrewMax

Drivetrain/Powertrain

- ✓ 5.7-Liter Aluminum i-Force V8 DOHC 32-Valve with Dual Independent Variable Valve Timing with intelligence (VVT-i)
 - 381 hp @ 5600 rpm; 401 lb.-ft. @ 3600 rpm
 - Tow Package¹
- ✓ 6-speed Electronically Controlled automatic Transmission with intelligence (ECT-i)
- ✓ Rear-Wheel Drive (RWD) or 4WDemand part-time 4WD
- ✓ 13 city/17 hwy/15 combined EPA-est. mpg rating (4x2)³¹
13 city/17 hwy/14 combined EPA-est. mpg rating (4x4)³¹

Exterior Features

- ✓ Black grille with color-keyed grille surround
- ✓ 20-in. 6-spoke alloy wheels
- ✓ LED headlights with LED accent lights and LED fog lights
- ✓ 38-gallon fuel tank

Interior Features

- ✓ Black premium perforated leather-trimmed seats
- ✓ Heated and ventilated front bucket seats
- ✓ Memory system for seats, outside mirrors and steering wheel
- ✓ Brushed-metal-style trim
- ✓ Dual zone automatic climate control
- ✓ Unique floor mats¹⁰
- ✓ Power vertical-sliding rear window
- ✓ Smart Key System³⁸ on front doors with Push Button Start

Audio Multimedia

- ✓ Premium Audio with Dynamic Navigation³⁷ and JBL^{®25} 8-in. high-resolution touchscreen, and Apple CarPlay^{®18} & Android Auto^{™21} & Amazon Alexa²⁴ compatible

Safety/Convenience

- ✓ Toyota Safety Sense™ P (TSS-P)²⁶ includes:
 - Pre-Collision System with Pedestrian Detection (PCS w/PD)²⁷
 - Lane Departure Alert (LDA) with Sway Warning System (SWS)²⁹
 - Automatic High Beams (AHB)³⁰
 - Dynamic Radar Cruise Control (DRCC)²⁸
- ✓ Star Safety System™
- ✓ Blind Spot Monitor (BSM)³⁹ with Rear Cross-Traffic Alert (RCTA)⁴⁰
- ✓ Front and rear parking assist sonar⁴¹

Options and Packages

- ✓ Running boards
- ✓ Power tilt/slide moonroof with sliding sunshade



1794 Edition

Available in CrewMax

Drivetrain/Powertrain

- ✓ 5.7-Liter Aluminum i-Force V8 DOHC 32-Valve with Dual Independent Variable Valve Timing with intelligence (VVT-i)
 - 381 hp @ 5600 rpm; 401 lb.-ft. @ 3600 rpm
 - Tow Package¹
- ✓ 6-speed Electronically Controlled automatic Transmission with intelligence (ECT-i)
- ✓ Rear-Wheel Drive (RWD) or 4WDemand part-time 4WD
- ✓ 13 city/17 hwy/15 combined EPA-est. mpg rating (4x2)³¹
13 city/17 hwy/14 combined EPA-est. mpg rating (4x4)³¹

Exterior Features

- ✓ Chrome grille
- ✓ 20-in. 6-spoke alloy wheels
- ✓ LED headlights with LED accent lights and LED fog lights
- ✓ Chrome heated auto-dimming and power-folding mirrors
- ✓ Chrome front bumper endcaps and color-keyed rear bumper
- ✓ 38-gallon fuel tank
- ✓ 1794 Edition badging

Interior Features

- ✓ Brown premium perforated leather-trimmed seats
- ✓ Heated and ventilated front bucket seats
- ✓ Memory system for seats, outside mirrors and steering wheel
- ✓ Unique floor mats¹⁰
- ✓ Power vertical-sliding rear window
- ✓ Smart Key System³⁸ on front doors with Push Button Start

Audio Multimedia

- ✓ Premium Audio with Dynamic Navigation³⁷ and JBL^{®25} 8-in. high-resolution touchscreen, and Apple CarPlay^{®18} & Android Auto^{™21} & Amazon Alexa²⁴ compatible

Safety/Convenience

- ✓ Toyota Safety Sense™ P (TSS-P)²⁶ includes:
 - Pre-Collision System with Pedestrian Detection (PCS w/PD)²⁷
 - Lane Departure Alert (LDA) with Sway Warning System (SWS)²⁹
 - Automatic High Beams (AHB)³⁰
 - Dynamic Radar Cruise Control (DRCC)²⁸
- ✓ Star Safety System™
- ✓ Blind Spot Monitor (BSM)³⁹ with Rear Cross-Traffic Alert (RCTA)⁴⁰
- ✓ Front and rear parking assist sonar⁴¹

Options and Packages

- ✓ TRD Off-Road Package
- ✓ 20-in. chrome-clad alloy wheels
- ✓ Running boards
- ✓ Power tilt/slide moonroof with sliding sunshade



TRD Pro

Available in Double Cab and CrewMax

Drivetrain/Powertrain and Performance

- ✓ 5.7-Liter Aluminum i-FORCE V8 DOHC 32-Valve with Dual Independent Variable Valve Timing with intelligence (VVT-i)
 - 381 hp @ 5600 rpm; 401 lb.-ft. @ 3600 rpm
 - Tow Package¹
- ✓ 6-speed Electronically Controlled automatic Transmission with intelligence (ECT-i)
- ✓ 4WDemand part-time 4WD
- ✓ TRD exhaust system with black chrome tips
- ✓ TRD Pro front and rear FOX^{®9} shocks
- ✓ 13 city/17 hwy/15 combined EPA-est. mpg rating (4x2)³¹
13 city/17 hwy/14 combined EPA-est. mpg rating (4x4)³¹

Exterior Features

- ✓ Heritage "TOYOTA" front grille
- ✓ 18-in. 5-spoke BBS^{®7} forged-aluminum TRD Pro wheels with Michelin[®] P275/65R18 tires
- ✓ TRD aluminum 1/4-in.-thick front skid plate
- ✓ Hood scoop
- ✓ LED headlights with LED accent lights
- ✓ Rigid Industries^{®8} LED fog lights
- ✓ "TRD Pro" bed stamp
- ✓ Deck rail system³⁵
- ✓ 38-gallon fuel tank
- ✓ Black external badging

Interior Features

- ✓ TRD Pro leather-trimmed front bucket seats embroidered with red contrast stitching and TRD Pro logo
- ✓ TRD shift knob
- ✓ TRD Pro floor mats¹⁰
- ✓ Fixed center console with "TRD Pro" badge
- ✓ Power tilt/slide moonroof with sliding sunshade (CrewMax only)
- ✓ Smart Key System³⁸ on front doors with Push Button Start
- ✓ Power vertical-sliding rear window (CrewMax only)
- ✓ Integrated Trailer Brake Controller (ITBC)⁴²

Audio Multimedia

- ✓ Premium Audio with Dynamic Navigation³⁷ and JBL^{®25} 8-in. high-resolution touchscreen, and Apple CarPlay^{®18} & Android Auto^{™21} & Amazon Alexa²⁴ compatible (CrewMax)
- ✓ Premium Audio with Dynamic Navigation³⁷ and Apple CarPlay^{®18} & Android Auto^{™21} & Amazon Alexa²⁴ compatible (Double Cab)

Safety/Convenience

- ✓ Toyota Safety Sense™ P (TSS-P)²⁶ includes:
 - Pre-Collision System with Pedestrian Detection (PCS w/PD)²⁷
 - Lane Departure Alert (LDA) with Sway Warning System (SWS)²⁹
 - Automatic High Beams (AHB)³⁰
 - Dynamic Radar Cruise Control (DRCC)²⁸
- ✓ Star Safety System™

For additional information on TRD Pro, please visit toyota.com/tundra

See numbered footnotes in Disclosures section.

TUNDRA COLORS & TRIMS



Midnight Black Metallic



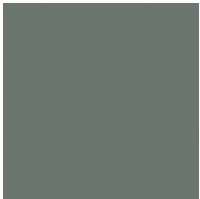
Voodoo Blue



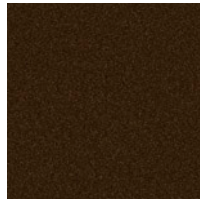
Cavalry Blue



Army Green



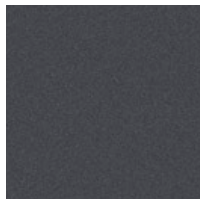
Lunar Rock



Smoked Mesquite



Barcelona Red Metallic



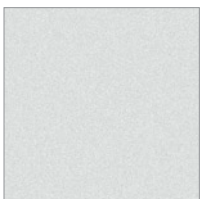
Magnetic Gray Metallic



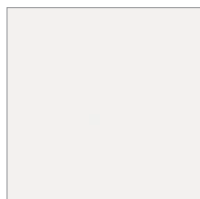
Cement



Silver Sky Metallic

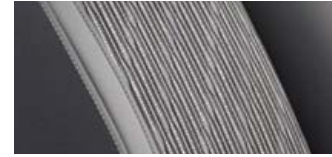


Wind Chill Pearl⁴³

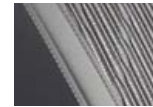
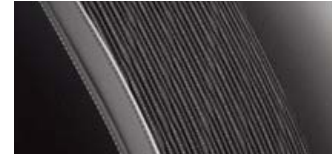


Super White

SR fabric shown in Graphite



SR5 fabric shown in Black



Graphite



Sand Beige

Limited leather trim shown in Black



Graphite



Sand Beige

Platinum premium leather trim shown in Black



1794 Edition premium leather trim shown in Brown



TRD Pro premium leather trim shown in Black



TUNDRA WHEELS



18-in. styled steel wheels with P255/70R18 tires



18-in. 5-spoke alloy wheels with P275/65R18 tires



18-in. split 5-spoke SX Package black alloy wheels with P255/70R18 tires



18-in. split 5-spoke TRD Off-Road Package alloy wheels with P275/65R18 tires



20-in. 6-spoke TRD Sport Package wheels with P275/55R20 tires



20-in. Limited grade split 5-spoke wheels with P275/55R20 tires



20-in. 6-spoke wheels with P275/55R20 tires



20-in. 6-spoke chrome-clad alloy wheels with P275/55R20 tires



18-in. BBS® forged-aluminum 5-spoke black alloy wheels with P275/65R18 tires



18-in. split 5-spoke Trail Special Edition alloy wheels with dark gray finish and P255/70R18 tires



20-in. split 5-spoke Nightshade Special Edition black alloy wheels with P275/55R20 tires

TUNDRA ACCESSORIES

This is a great way to add extra personality to your Tundra. Not every accessory is available in your area, so for a complete list of accessories, go to toyota.com/tundra/accessories.



Spray-on bedliner



Predator tube step



Hard tri-fold tonneau cover



Exhaust tips — black or chrome



Doorsill protector



Tailgate insert — black or chrome



All-weather floor liners¹⁰



In-vehicle safe by Console Vault[®]



High-performance LED fog lights — black or chrome

WARRANTIES

Every Toyota Car, Truck and SUV is built to exceptional standards. And that's not idle boasting. We back it up with these Limited Warranty Coverages:

Basic: 36 months/36,000 miles (all components other than normal wear and maintenance items).

Powertrain: 60 months/60,000 miles (engine, transmission/transaxle, drive system, seatbelts and airbags).

Rust-Through: 60 months/unlimited miles (corrosion perforation of sheet metal).

Emissions: Coverages vary under Federal and California regulations. Refer to applicable *Warranty and Maintenance Guide* for details.

Accessories: For Genuine Toyota Accessories purchased at the time of the new vehicle purchase, the Toyota Accessory Warranty coverage is in effect for 36 months/36,000 miles from the vehicle's in-service date, which is the same coverage as the Toyota New Vehicle Limited Warranty.

For Genuine Toyota Accessories purchased after the new vehicle purchase the coverage is 12 months, regardless of mileage, from the date the accessory was installed on the vehicle, or the remainder of any applicable new vehicle warranty, whichever provides greater coverage.

You may be eligible for transportation assistance if it's necessary that your vehicle be kept overnight for repairs covered under warranty. Please see your authorized Toyota dealership for further details.

For complete details about Toyota's warranties, please visit www.toyota.com, refer to the applicable *Warranty and Maintenance Guide* or see your Toyota dealer.

TUNDRA FEATURES⁴⁴

S = Standard O = Optional P = Available Package

Exterior	Double Cab				CrewMax				
	SR	SR5	Limited	TRD Pro	SR5	Limited	Platinum	1974 Edition	TRD Pro
LED headlights with LED accent lights, with manual level control and auto on/off feature			S			S	S	S	
LED headlights with LED accent lights and black sport trim, with manual level control and auto on/off feature		P	P	S	P	P		P	S
LED fog lights		P	S		P	S	S	S	
Rigid Industries [®] LED fog lights				S					S
Halogen headlights with LED accent lights, with manual level control and auto on/off feature	S	S			S				
Halogen fog lights		S			S				
Gray grille with gray surround	S								
Gray grille with chrome surround and chrome front bumper endcaps		S			S				
Silver grille with chrome surround and chrome front bumper endcaps			S			S			
Black honeycomb-style grille with color-keyed grille surround and color-keyed front bumper endcaps							S		
Gray grille with color-keyed grille surround and color-keyed front bumper endcaps		P			P				
Chrome grille with chrome front bumper endcaps								S	
"TOYOTA" grille with color-keyed grille surround and color-keyed endcaps				S					S
Chrome rear bumper		S	S		S	S			
Color-keyed rear bumper		P	P	S	P	P	S	S	S
Black plastic rear bumper	S								
Deck rail system ³⁵ with four adjustable tie-down cleats	O	O	S	S	O	S	S	S	S
Deck rail and tailgate caps	S	S	S	S	S	S	S	S	S
TRD Pro bedside stamping				S					S
Taillights and stop lights with dual vortex generators	S	S	S	S	S	S	S	S	S
Black heated power outside mirrors	S	S			S				
Chrome heated power outside mirrors			S			S			
Color-keyed heated power outside mirrors		P		S	P				S
Chrome heated power and auto-dimming outside mirrors with turn signal and blind spot warning ³⁹ indicators, and power-folding, reverse tilt-down and memory features							S	S	
Heated power outside tow mirrors with integrated blind spot mirrors ⁴⁵ turn signal indicators and manual-extend and -folding feature; not available on Platinum, 1794 Edition, TRD Pro and models equipped with BSM and RCTA	O	O	O		O	O			
Power tilt/slide moonroof with sliding sunshade (deletes overhead console with storage area)						O	O	O	S
Two-speed windshield wipers	S								
Variable intermittent windshield wipers		S	S	S	S	S	S	S	S
Windshield wiper de-icer	S	S	S	S	S	S	S	S	S
High Solar Energy-Absorbing (HSEA) glass	S	S	S	S	S	S	S	S	S
Easy lower and lift tailgate	S	S	S	S	S	S	S	S	S
Running boards	O	O	O		O	O	O	O	
Front and rear mudguards	S	S	S	S	S	S	S	S	S
Front tow hooks ¹		P	P	S	P	P	P	P	S
TRD front skid plate				S					S
Skid plate on engine, fuel tank		P	P		P	P		P	
TRD Pro front and rear TRD FOX ^{®9} shocks with remote reservoirs				S					S
TRD Sport front and rear TRD Bilstein ^{®46} shocks and anti-sway bars (5.7L only)		P			P				
"5.7L i-FORCE V8" engine badge (driver and front passenger door)	S	S	S		S	S			
"PLATINUM" badge (driver and front passenger door)							S		
"1794 EDITION" badge (driver and front passenger door)								S	
Chrome 4x4 badge (lower-left portion of tailgate)	S	S	S		S	S	S	S	
Chrome "TUNDRA" badge (driver and front passenger door)		S	S		S	S			
Black "5.7L i-FORCE V8" engine badge (driver and front passenger door)				S					S
Black 4x4 badge (lower-left portion of tailgate)				S					S
Black "TUNDRA" badge (driver and front passenger door)				S					S
Black outside door handles	S	S			S				

TUNDRA FEATURES

S = Standard O = Optional P = Available Package

Exterior (continued)	Double Cab				CrewMax				
	SR	SR5	Limited	TRD Pro	SR5	Limited	Platinum	1974 Edition	TRD Pro
Black outside door handles with touch-sensor lock/unlock feature		P		S	P				S
Chrome-accented outside door handles with touch-sensor lock/unlock feature			S			S	S	S	
Black roof-mounted antenna	S	S	S	S	S	S	S	S	S
Large fuel tank (38-gallon)		P	S	S	P	S	S	S	S
Interior									
Air conditioning with dust and pollen air filter and single temperature setting for driver and front passenger	S	S			S				S
Automatic dual zone climate control with dust and pollen filter and individual temperature settings for driver and front passenger		P	S	S	P	S	S	S	
Integrated backup camera ³²	S	S	S	S	S	S	S	S	S
5-passenger seating capacity		P	S	S	P	S	S	S	S
6-passenger seating capacity	S	S			S				
Vinyl 40/20/40 split fold-down front bench seat; 4-way adjustable driver's seat; 4-way adjustable front passenger bench seat	P								
Fabric-trimmed 40/20/40 split fold-down front bench seat; 4-way adjustable driver's seat; 4-way adjustable front passenger bench seat	S	S			S				
Fabric-trimmed front bucket seats; 10-way power-adjustable driver's seat; 4-way adjustable front passenger seat		P			P				
Leather-trimmed front bucket seats; 10-way power-adjustable driver's seat; 4-way adjustable front passenger seat					P				
Leather-trimmed and heated front bucket seats; 10-way power-adjustable driver's seat; 6-way power-adjustable front passenger seat			S			S			
Black TRD Pro leather-trimmed front bucket seats with red contrast stitching and TRD Pro logo; 10-way power-adjustable driver's seat; 4-way adjustable front passenger seat				S					S
Perforated, leather-trimmed, heated and ventilated front bucket seats with embroidered upper backrests; 2-way power-adjustable driver's seat, which includes power thigh and lumbar support and a 2-position memory function; 6-way power-adjustable front passenger seat with power lumbar support							S	S	
60/40 split fold-up rear seats	S	S	S	S	S	S	S	S	S
Carpet flooring and TRD Pro floor mats ¹⁰				S					S
Carpet flooring (not available with Work Truck Package)	S	S	S		S	S			
Carpet flooring and premium floor mats ¹⁰							S	S	
Heavy-duty all-weather flooring and floor mats ¹⁰	P								
Urethane tilt 4-spoke steering wheel with column shifter, Bluetooth ^{®33} hands-free phone, voice-command, Dynamic Radar Cruise Control (DRCC), ²⁸ Lane Departure Alert (LDA) ²⁹ controls	S								
Urethane tilt 4-spoke steering wheel with column shifter, audio, Bluetooth ^{®33} hands-free phone, voice-command, Dynamic Radar Cruise Control (DRCC), ²⁸ Lane Departure Alert (LDA) ²⁹ controls		S			S				
Urethane tilt/telescopic 4-spoke steering wheel with audio, Bluetooth ^{®33} hands-free phone, voice-command, Dynamic Radar Cruise Control (DRCC), ²⁸ Lane Departure Alert (LDA) ²⁹ controls		P		S	P				S
Leather-trimmed tilt/telescopic 4-spoke steering wheel with audio, Bluetooth ^{®33} hands-free phone, voice-command, Dynamic Radar Cruise Control (DRCC), ²⁸ Lane Departure Alert (LDA) ²⁹ controls			S			S			
Leather-trimmed power tilt/telescopic 4-spoke steering wheel (with wood-grain-style accents — 1974 Edition only) with memory function and audio, Bluetooth ^{®33} hands-free phone, voice-command, Dynamic Radar Cruise Control (DRCC), ²⁸ Lane Departure Alert (LDA) ²⁹ controls							S	S	
Center console gated shifter		P	S	S	P	S	S	S	S
Urethane shift lever with wood-grain-style insert								S	
TRD shift knob		P		S	P				S
4.2-in. TFT Multi-Information Display (MID) with odometer, outside temperature, fuel economy, cruising range, average speed, trip distance with timer, TPMS ⁴⁷ and Integrated Trailer Brake Controller (ITBC) ⁴² monitor (5.7L V8 only); shift-position indicator	S	S	S	S	S	S	S	S	S
Power windows with driver's-side one-touch auto down	S	S	S		S	S			

See numbered footnotes in Disclosures section.

TUNDRA FEATURES

S = Standard O = Optional P = Available Package

Interior (continued)	Double Cab				CrewMax				
	SR	SR5	Limited	TRD Pro	SR5	Limited	Platinum	1974 Edition	TRD Pro
Power windows with driver and front passenger one-touch auto up/down			P	S		P	S	S	S
Power door locks with shift-linked automatic lock/unlock feature	S	S	S	S	S	S	S	S	S
Fixed rear window	S	P							
Horizontal-sliding rear window with privacy glass		P							
Power horizontal-sliding rear window with privacy glass			S	S					
Power vertical-sliding rear window with defogger and privacy glass					S	S	S	S	S
Remote keyless entry system with lock, unlock and panic functions (not available with Work Truck Package)	S	S			S				
Smart Key System ³⁸ on front doors with Push Button Start: remote keyless entry with lock, unlock and panic functions, and remote illuminated entry		P	S	S	P	S	S	S	S
Day/night rearview mirror	S								
Auto-dimming rearview mirror with compass and HomeLink ⁴⁸ universal transceiver		S			S				
Auto-dimming rearview mirror with HomeLink ⁴⁸ universal transceiver		P	S	S	P	S	S	S	S
Overhead console with sunglasses storage					S	S	S	S	
Fixed center console with covered storage compartment and second-row vents (front bucket seats only)		P	S	S	P	S	S	S	S
Rear under-seat storage compartment		S	S	S					
Two front 12V auxiliary power outlets; one rear 12V auxiliary power outlet	S	S	S	S	S	S	S	S	S
Front and rear maplights	S	S	S	S	S	S	S	S	S
Two front and two rear cup holders, four front and two rear bottle holders (three front cup holders on Limited)	S	S	S	S					
Two front and two rear cup holders, four front and four rear bottle holders (three front cup holders on Limited, Platinum, 1974 Edition and TRD Pro)					S	S	S	S	S

Audio Multimedia

Audio — includes 7.0-in. touchscreen, six speakers, AM/FM, Android Auto^{TM21} & Apple CarPlay^{®18} compatible, USB media port,³⁴ two USB charge ports,³⁴ hands-free phone capability, advanced voice recognition⁴⁹ and music streaming³³ via Bluetooth^{®33} wireless technology, SiriusXM^{®22} with 3-month All Access trial subscription,²³ Connected Services¹¹ — Safety Connect^{®12} with 1-year trial,⁵⁰ Wi-Fi Connect¹⁶ with up to 2 GB within 3-month trial.⁵¹ See toyota.com/audio-multimedia for details. S

Audio Plus — includes 8.0-in. touchscreen, nine speakers (CrewMax models) or seven speakers (Double Cab models), AM/FM/HD Radio,^{TM36} USB media port,³⁴ two USB charge ports,³⁴ advanced voice recognition,⁴⁹ hands-free phone capability and music streaming³³ via Bluetooth^{®33} wireless technology, Android Auto^{TM21} & Apple CarPlay^{®18} compatible, SiriusXM^{®22} with 3-month All Access trial subscription,²³ Connected Services¹¹ — Safety Connect^{®12} with 1-year trial,⁵⁰ Wi-Fi Connect¹⁶ with up to 2 GB within 3-month trial.⁵¹ See toyota.com/audio-multimedia for details. S S

Audio Plus — includes 8.0-in. touchscreen, nine speakers (CrewMax models) or seven speakers (Double Cab models), AM/FM/HD Radio,^{TM36} USB media port,³⁴ two USB charge ports,³⁴ advanced voice recognition,⁴⁹ hands-free phone capability and music streaming³³ via Bluetooth^{®33} wireless technology, Android Auto^{TM21} & Apple CarPlay^{®18} compatible, SiriusXM^{®22} with 3-month All Access trial subscription,²³ Connected Services¹¹ — Safety Connect^{®12} with 1-year trial,⁵⁰ Service Connect¹⁴ with 10-year trial,⁵² Remote Connect¹⁵ with 1-year trial,⁵³ Wi-Fi Connect¹⁶ with up to 2 GB within 3-month trial.⁵¹ See toyota.com/audio-multimedia for details. P P

Premium Audio with Dynamic Navigation³⁷ — includes 8.0-in. touchscreen, nine speakers (CrewMax models) or seven speakers (Double Cab models), AM/FM/HD Radio,^{TM36} USB media port,³⁴ two USB charge ports,³⁴ Dynamic Navigation³⁷ with up to 3-year trial,⁵⁴ Dynamic POI Search, Dynamic Voice Recognition,⁵⁵ hands-free phone capability and music streaming³³ via Bluetooth^{®33} wireless technology, Android Auto^{TM21} & Apple CarPlay^{®18} compatible, SiriusXM^{®22} with 3-month All Access trial subscription,²³ Connected Services¹¹ — Safety Connect^{®12} with 1-year trial,⁵⁰ Service Connect¹⁴ with 10-year trial,⁵² Remote Connect¹⁵ with 1-year trial,⁵³ Wi-Fi Connect¹⁶ with up to 2 GB within 3-month trial,⁵¹ Destination Assist¹⁷ with 1-year trial.⁵⁶ See toyota.com/audio-multimedia for details. P S S P S

TUNDRA FEATURES

S = Standard O = Optional P = Available Package

Audio Multimedia (continued)

	Double Cab				CrewMax				
	SR	SR5	Limited	TRD Pro	SR5	Limited	Platinum	1974 Edition	TRD Pro
Premium Audio with Dynamic Navigation ³⁷ and JBL ^{®25} — includes 8.0-in. touchscreen, 12 speakers including subwoofer and amplifier, AM/FM/HD Radio, ³⁶ USB media port, ³⁴ two USB charge ports, ³⁴ Dynamic Navigation ³⁷ with up to 3-year trial, ⁵⁴ Dynamic POI Search, Dynamic Voice Recognition, ⁵⁵ hands-free phone capability and music streaming ³³ via Bluetooth ^{®33} wireless technology, Android Auto ^{™21} & Apple CarPlay ^{®18} compatible, SiriusXM ^{®22} with 3-month All Access trial subscription. ²³ Connected Services ¹¹ — Safety Connect ^{®12} with 1-year trial, ⁵⁰ Service Connect ¹⁴ with 10-year trial, ⁵² Remote Connect ¹⁵ with 1-year trial, ⁵³ Wi-Fi Connect ¹⁶ with up to 2 GB within 3-month trial, ⁵¹ Destination Assist ¹⁷ with 1-year trial. ⁵⁶ See toyota.com/audio-multimedia for details.				P		P	S	S	S

Safety and Convenience

Toyota Safety Sense™ P (TSS-P)²⁶ — Pre-Collision System with Pedestrian Detection (PCS w/PD);²⁷ Lane Departure Alert (LDA) with Sway Warning System (SWS);²⁹ Automatic High Beams (AHB)³⁰ and Dynamic Radar Cruise Control (DRCC)²⁸

	S	S	S	S	S	S	S	S	S
STAR SAFETY SYSTEM™ Star Safety System™ — includes Vehicle Stability Control (VSC); ⁵⁷ Traction Control (TRAC), Anti-lock Brake System (ABS) with Electronic Brake-force Distribution (EBD), Brake Assist (BA) ⁵⁸ and Smart Stop Technology® (SST) ⁵⁹	S	S	S	S	S	S	S	S	S
Eight airbags ⁶⁰	S	S	S	S	S	S	S	S	S
Driver and front outboard passenger Advanced Airbag System ⁶⁰	S	S	S	S	S	S	S	S	S
Driver and front outboard passenger seat-mounted side airbags, driver and front passenger knee airbags, and front and rear Roll-sensing Side Curtain Airbags (RSCA) ⁶⁰	S	S	S	S	S	S	S	S	S
3-point seatbelts for all seating positions; driver-side Emergency Locking Retractor (ELR) and Automatic/Emergency Locking Retractor (ALR/ELR) on all passenger seatbelts	S	S	S	S	S	S	S	S	S
Driver and front passenger seatbelt pretensioners with force limiters	S	S	S	S	S	S	S	S	S
LATCH (Lower Anchors and Tethers for CHildren) includes lower anchors on outboard rear seats and tether anchor on rear center seat	S	S	S	S	S	S	S	S	S
Child-protector rear door locks	S	S	S	S	S	S	S	S	S
Tire Pressure Monitor System (TPMS) ⁴⁷	S	S	S	S	S	S	S	S	S
Front and rear parking assist sonar ⁴¹		P	P		P	P	S	S	
Blind Spot Monitor (BSM) ³⁹ with Rear Cross-Traffic Alert (RCTA) ⁴⁰ and color-keyed rear bumper		P	P		P	P	S	S	
Trailer-Sway Control (TSC) ⁶¹	S	S	S	S	S	S	S	S	S
Integrated Trailer Brake Controller (ITBC) ⁴² with Multi-Information Display (MID) monitoring screen and trailer brake type, gain and manual trailer brake output controls (5.7L V8 only)	S	S	S	S	S	S	S	S	S
Anti-theft system with engine immobilizer ⁶²	S	S			S				
Anti-theft system with alarm and engine immobilizer ⁶²		P	S	S	P	S			S
Anti-theft system with alarm, Glass Breakage Sensor (GBS) ⁶³ and engine immobilizer ⁶²			P			P	S	S	
ToyotaCare ⁶⁴ featuring a no cost maintenance plan with Roadside Assistance	S	S	S	S	S	S	S	S	S

TUNDRA FEATURES

S = Standard O = Optional P = Available Package

Packages and Options

	Double Cab				CrewMax					
	SR	SR5	Limited	TRD Pro	SR5	Limited	Platinum	1974 Edition	TRD Pro	
Trail Special Edition — 18-in. split 5-spoke alloy wheels with dark gray finish, Michelin® all-terrain tires, lockable bed storage boxes with additional insulation on driver's side to double as a cooler, 1794 grille with color surround, black exterior badging, spray-on bedliner, Black seating with unique tan stitching, all-weather floor liners ¹⁰							P			
Nightshade Special Edition — black 20-in. wheels, darkened chrome grille, black mirror caps, black exhaust tip, black door handles, black badging, Black leather-trimmed seats				P			P			
SR Work Truck Package — adds durable vinyl seating and flooring and removes wireless door lock feature	P									
SR5 Leather Package — adds larger fuel tank; replaces front bench seating with leather-trimmed front bucket seats with power driver's seat with power lumbar support; adds front center console with floor-mounted urethane shift lever and knob, tilt/telescopic urethane steering wheel, three front cup holders, and an anti-theft system with alarm and engine immobilizer ⁶²							P			
SR5 Upgrade Package — adds larger fuel tank; replaces front bench seating with front bucket seats with power driver's seat with power lumbar support; adds front center console with floor-mounted urethane shift lever and knob, tilt/telescopic urethane steering wheel, three front cup holders, and an anti-theft system with alarm and engine immobilizer ⁶²			P				P			
Convenience Package — includes front and rear parking assist sonar, ⁴¹ Blind Spot Monitor (BSM) ³⁹ with Rear Cross-Traffic Alert (RCTA) ⁴⁰ (upgrades to color-keyed rear bumper; requires SR5 Upgrade Package on SR5 models)			P				P	S	S	
SX Package — upgrades standard wheels to 18-in. 5-spoke black alloy wheels, replaces front bench seating with front bucket seats with power driver's seat with power lumbar support, adds color-keyed exterior styling, and removes exterior badging			P				P			
Premium Audio with Dynamic Navigation ³⁷ — includes 8-in. touchscreen, nine speakers (CrewMax models) or seven speakers (Double Cab models), AM/FM/HD Radio ^{TM36} USB media port, ³⁴ two USB charge ports, ³⁴ Dynamic Navigation ³⁷ with up to 3-year trial, ³⁴ Dynamic POI Search, Dynamic Voice Recognition, ⁵⁵ hands-free phone capability and music streaming ³³ via Bluetooth ^{®33} wireless technology, Android Auto ^{TM21} & Apple CarPlay ^{®18} compatible, SiriusXM ^{®22} with 3-month All Access trial subscription ²³ Connected Services ¹¹ — Safety Connect ^{®12} with 1-year trial, ⁵⁰ Wi-Fi Connect ¹⁶ with up to 2 GB within 3-month trial, ⁵¹ Destination Assist ¹⁷ with 1-year trial. ⁵⁶ See toyota.com/audio-multimedia for details.			O				O			
TRD Off-Road Package — upgrades standard wheels to 18-in. split 5-spoke TRD Off-Road Package alloy wheels and all-terrain P275/65R18 tires; includes trail-tuned Bilstein ^{®46} shock absorbers, engine skid plate, fuel tank skid plate, front tow hooks ¹ (on 4x2 models; standard on 4x4 models), LED headlights and LED fog lights (on SR5 models only), TRD Off-Road floor mats ¹⁰ (on SR5 and Limited models only), and bedside TRD Off-Road decals			P	P			P	P		P
TRD Sport Package — upgrades standard wheels to 20-in. 6-spoke TRD Sport Package alloy wheels and P275/55R20 tires; includes sport-tuned Bilstein ^{®46} shock absorbers, TRD front and rear anti-sway bars, color-keyed accents (grille surround, mirror caps, front and rear bumper), LED headlights and LED fog lights, TRD Sport floor mats, ¹⁰ TRD shift knob, hood scoop and bedside TRD Sport decals; requires SR5 Upgrade Package			P				P			
Limited Premium Package — includes front and rear parking assist sonar, ⁴¹ Blind Spot Monitor (BSM) ³⁹ with Rear Cross-Traffic Alert (RCTA) ⁴⁰ (upgrades to color-keyed rear bumper), with additional convenience features including: power windows with driver and front passenger auto up/down; cab, driver footwell and ignition key illuminated entry system; an anti-theft system with alarm, Glass Breakage Sensor (GBS), ⁶³ engine immobilizer, ⁶² and Premium Audio with Dynamic Navigation ³⁷ and JBL ^{®25} (JBL ^{®25} Audio on CrewMax models only)				P			P			
Deck rail system ³⁵ with four adjustable tie-down cleats	O	O	S	S	O	S	S	S	S	S
Heated power outside tow mirrors with integrated blind spot mirrors, ⁴⁵ turn signal indicators and manual-extend and -folding feature (5.7L V8 only; not available with BSM with RCTA)	O	O	O		O	O				
Running boards	O	O	O		O	O	O	O		
Power tilt/slide moonroof with sliding sunshade						O	O	O		S

TUNDRA SPECIFICATIONS

S = Standard O = Optional P = Available Package

Mechanical

	Double Cab				CrewMax				
	SR	SR5	Limited	TRD Pro	SR5	Limited	Platinum	1974 Edition	TRD Pro
ENGINE									
5.7-Liter Aluminum i-FORCE V8 with DOHC 32-Valve cylinder heads with Acoustic Control Induction System (ACIS), Dual Independent Variable Valve Timing with intelligence (VVT-i) and 4-2-1 tubular stainless steel exhaust manifold; 381 hp @ 5600 rpm; 401 lb.-ft. @ 3600 rpm	S	S	S	S	S	S	S	S	S
IGNITION SYSTEM									
Electronic, with Toyota Direct Ignition (TDI)	S	S	S	S	S	S	S	S	S
Heavy-duty battery and heavy-duty alternator	S	S	S	S	S	S	S	S	S
EXHAUST SYSTEM									
TRD dual black-chrome-tipped stainless steel exhaust system				S					S
Standard stainless steel exhaust system	S	S	S		S	S	S	S	
EMISSION RATING									
Low Emission Vehicle II (LEV-II)	S	S	S	S	S	S	S	S	S
TRANSMISSION									
6-speed Electronically Controlled automatic Transmission with intelligence (ECT-i), sequential shift mode and uphill/downhill shift logic	S	S	S	S	S	S	S	S	S
Ratios: 5.7L V8	S	S	S	S	S	S	S	S	S
1st gear = 3.33									
2nd gear = 1.96									
3rd gear = 1.35									
4th gear = 1.00									
5th gear = 0.73									
6th gear = 0.59									
Reverse = 3.06									
Rear differential = 4.30	S	S	S	S	S	S	S	S	S
4WD transfer case (high/low range) = 1.00/2.64	S	S	S	S	S	S	S	S	S
DRIVETRAIN									
Rear-Wheel Drive (RWD) with Automatic Limited-Slip Differential (Auto LSD) ⁴	S	S	S		S	S	S	S	
4WDemand part-time 4WD with electronically controlled transfer case, Active Traction Control (A-TRAC) and Automatic Limited-Slip Differential (Auto LSD) ⁴	O	O	O	S	O	O	O	O	S
Suspension									
Independent coil-spring high-mounted double-wishbone front suspension with stabilizer bar and low-pressure nitrogen gas-filled shock absorbers; live axle with trapezoidal multi-leaf rear suspension with staggered outboard-mounted low-pressure nitrogen gas-filled shock absorbers	S	S	S		S	S	S	S	
Independent TRD coil-spring high-mounted double-wishbone front suspension with a 2-in. lift with stabilizer bar and TRD FOX [®] front shock absorbers with piggyback reservoirs; live rear axle with trapezoidal multi-leaf rear suspension with staggered outboard-mounted TRD FOX [®] shock absorbers with piggyback reservoirs				S					S
STEERING									
Hydraulic power rack-and-pinion	S	S	S	S	S	S	S	S	S
Steering wheel turns, lock-to-lock	3.71	3.71	3.71	3.71	3.71	3.71	3.71	3.71	3.71
Turning circle diameter, curb to curb (ft.) (Standard Bed/Long Bed) (Short Bed on CrewMax)	44.0/49.0	44.0/49.0	44.0/—	44.0/—	44.0	44.0	44.0	44.0	44.0
BRAKES									
Power-assisted ventilated 13.9-in. front disc brakes with opposed 4-piston brake calipers; ventilated 13.6-in. rear disc brakes, and Star Safety System™	S	S	S	S	S	S	S	S	S
Weights and Capacities									
BASE CURB WEIGHT (lbs.)									
5.7L V8 Standard Bed (4x2/4x4)	5,170/5,470	5,170/5,470	5,240/5,530	—/5470					
5.7L V8 Long Bed (4x2/4x4)	5,300/5,600	5,300/5,600							
5.7L V8 Short Bed (4x2/4x4)					5,340/5,640	5,380/5,680	5,380/5,670	5,380/5,670	—/5,640
GROSS VEHICLE WEIGHT RATING (GVWR) (lbs.)									
5.7L V8 Standard Bed (4x2/4x4)	6,900/7,100	6,900/7,100	6,900/7,100	—/7,100					
5.7L V8 Long Bed (4x2/4x4)	7,000/7,200	7,000/7,200							

TUNDRA SPECIFICATIONS

S = Standard O = Optional P = Available Package

Weights and Capacities (continued)	Double Cab				CrewMax				
	SR	SR5	Limited	TRD Pro	SR5	Limited	Platinum	1974 Edition	TRD Pro
MAXIMUM PAYLOAD³ (lbs.)									
5.7L V8 Standard Bed (4x2/4x4)	1,730/1,630	1,730/1,630	1,660/1,570	—/1,630					
5.7L V8 Long Bed (4x2/4x4)	1,700/1,600	1,700/1,600							
5.7L V8 Short Bed (4x2/4x4)					1,660/1,560	1,620/1,520	1,620/1,530	1,620/1,530	—/1,560
MAXIMUM TOWING¹ (lbs.)									
5.7L V8 Tow Package includes: towing receiver hitch, 4.30 axle ratio, TOW/HAUL mode switch, trailer brake controller, heavy-duty battery, 170-amp alternator and 4-/7-pin connector									
	S	S	S	S	S	S	S	S	S
5.7L V8 Standard Bed (4x2/4x4)	10,200/9,900	10,200/9,900	10,100/9,100	—/9,900					
5.7L V8 Long Bed (4x2/4x4)	10,100/9,800	10,100/9,800							
5.7L V8 Short Bed (4x2/4x4)					10,100/9,800	9,400/8,800	9,400/8,800	9,400/8,800	—/9,200
FUEL TANK									
26.4-gal.	S	S			S				
38.0-gal.		O	S	S	O	S	S	S	S

Dimensions

EXTERIOR DIMENSIONS (in.)									
Overall height (4x2/4x4)	76.0/76.4	76.0/76.4	76.0/76.2	—/77.2	75.8/76.2	75.8/76.2	75.8/76.2	75.8/76.2	—/77.2
Overall width	79.9	79.9	79.9	—/79.9	79.9	79.9	79.9	79.9	—/79.9
Overall length (Standard Bed)	228.9	228.9	228.9	228.9					
Overall length (Long Bed)	247.8	247.8							
Overall length (Short Bed)					228.9	228.9	228.9	228.9	228.9
Wheelbase (Standard Bed)	145.7	145.7	145.7	145.7					
Wheelbase (Long Bed)	164.6	164.6							
Wheelbase (Short Bed)					145.7	145.7	145.7	145.7	145.7
Inside bed length (Standard Bed)	78.7	78.7	78.7	78.7					
Inside bed length (Long Bed)	97.6	97.6							
Inside bed length (Short Bed)					66.7	66.7	66.7	66.7	66.7
Bed depth	22.2	22.2	22.2	22.2	22.2	22.2	22.2	22.2	22.2
Bed width at tailgate	66.4	66.4	66.4	66.4	66.4	66.4	66.4	66.4	66.4
Bed width (between wheelwells)	50.0	50.0	50.0	50.0	50.0	50.0	50.0	50.0	50.0
Track (front/rear)	67.9/67.9	67.9/67.9	67.9/67.9	67.9/67.9	67.9/67.9	67.9/67.9	67.9/67.9	67.9/67.9	67.9/67.9
Ground clearance (4x2/4x4)	10.2*/10.6	10.2*/10.6	10.2/10.4	—/10.6	10.2/10.6	10.0/10.4	10.4/10.4	10.4/10.4	—/10.6
INTERIOR DIMENSIONS, front/rear (in.)									
Head room	39.7/38.7	39.7/38.7	39.7/38.7	39.7/38.7	39.7/38.7	39.7/38.9	39.7/38.9	39.7/38.9	39.7/38.9
Hip room	62.6/62.6	62.6/62.6	62.6/62.6	62.6/62.6	62.6/60.4	62.6/60.4	62.6/60.4	62.6/60.4	62.6/60.4
Leg room	42.5/34.7	42.5/34.7	42.5/34.7	42.5/34.7	42.5/42.3	42.5/42.3	42.5/42.3	42.5/42.3	42.5/42.3
Shoulder room	65.7/65.6	65.7/65.6	65.7/65.6	65.7/65.6	65.7/65.5	65.7/65.5	65.7/65.5	65.7/65.5	65.7/65.5
TIRES									
Type — All-Season	S	S	S	S	S	S	S	S	S
Spare — Full-size mounted under body	S	S	S	S	S	S	S	S	S

Mileage Estimates (mpg city/highway/combined)³¹

5.7L V8 4x2	13/17/15	13/17/15	13/17/15		13/17/15	13/17/15	13/17/15	13/17/15	
5.7L V8 4x4	13/17/14	13/17/14	13/17/14	13/17/14	13/17/14	13/17/14	13/17/14	13/17/14	13/17/14

DISCLOSURES

1. Before towing, confirm your vehicle and trailer are compatible, hooked up and loaded properly and that you have any necessary additional equipment. Do not exceed any Weight Ratings and follow all instructions in your *Owner's Manual*. The maximum you can tow depends on base curb weight plus the total weight of any cargo, occupants, and added vehicle equipment. "Added vehicle equipment" includes additional standard/optional equipment and accessories added by the manufacturer, dealers, and/or vehicle owners. The only way to be certain of your vehicle's exact curb weight is to weigh your vehicle without passengers or cargo. [Calculated with the new SAE J2807 method.] Installation of a tow hitch receiver or other accessories located near the rear bumper or side-door kick sensors may require disabling or removing the kick sensor, and the sensor operation setting in your vehicle should be turned off. See *Owner's Manual* for limitations. 2. Based on manufacturers' data. 3. Payload Capacity is the calculation of GVWR minus curb weight and should be used for comparison purposes only. The maximum amount of passenger and cargo weight your vehicle can carry is the Load Carrying Capacity indicated on the label(s) on the driver's doorjamb. 4. Auto LSD is an electronic, brake-actuated limited-slip differential that automatically activates when VSC is disengaged at low speeds. See *Owner's Manual* for additional limitations and details. 5. Cargo and load capacity limited by weight and distribution. Always properly secure cargo and cargo area. 6. The Toyota Tundra is designed to meet most off-road driving requirements, but off-roading is inherently dangerous. Abusive use may result in bodily harm or vehicle damage. Toyota encourages responsible operation to help protect you, your vehicle and the environment. Seatbelts should be worn at all times. Do not allow passengers to ride in cargo area. 7. BBS® is a registered trademark of BBS of America, Inc. 8. Rigid Industries® is a registered trademark of JST Performance, LLC d/b/a Rigid Industries. 9. FOX is a registered trademark of FOX Factory, Inc. 10. This floor mat/floor liner was designed specifically for use in your model and model year vehicle and SHOULD NOT be used in any other vehicle. To avoid potential interference with pedal operation, each mat/liner must be secured with its fasteners. Do not install a floor mat/floor liner on top of an existing floor mat/floor liner. 11. Connected Services depends on an operative telematics device, a cellular connection, navigation map data, GPS signal strength and other factors outside of Toyota's control, all of which can limit system functionality or availability, including access to response center and emergency support. Service may vary by vehicle and region. Terms of Use apply. Data charges may apply. Apps and services subject to change at any time without notice. See toyota.com/connected-services for details. To learn about Toyota's data collection, use, sharing and retention practices, please visit <https://www.toyota.com/privacyvts/>. Stolen vehicle police report required to use Stolen Vehicle Locator. 12. Toyota Safety Connect® depends on an operative telematics device, a cellular connection, navigation map data and GPS signal strength and other factors outside of Toyota's control, all of which can limit system functionality or availability, including access to response center and emergency support. Stolen vehicle police report required to use Stolen Vehicle Locator. Registration required. Service subject to change at any time without notice. Terms of Use apply. Service may vary by vehicle and region. See usage precautions and service limitations in *Owner's Manual* and at toyota.com/connected-services/ for additional details. To learn about Toyota's data collection, use, sharing and retention practices, please visit <https://www.toyota.com/privacyvts/>. 13. Requires adequate cellular coverage and GPS signal strength. May not work in all areas. Service may vary by vehicle and region. See Toyota Dealer for details and exclusions. 14. Information provided is based on the last time data was collected from the vehicle and may not be up to date. Service Connect depends on an operative telematics device, a cellular connection, navigation map data, GPS signal strength and other factors outside of Toyota's control, which can limit functionality or availability. Service may vary by vehicle and region. Registration required. Service subject to change at any time without notice. Terms and conditions of subscription service agreement apply. See usage precautions and service limitations in *Owner's Manual* and at toyota.com/connected-services/ for additional details. To learn about Toyota's data collection, use, sharing and retention, please visit <https://www.toyota.com/privacyvts/>. 15. Use only if aware of circumstances surrounding vehicle and it is legal and safe to do so (e.g., do not remotely start engine if vehicle is in an enclosed space or vehicle is occupied by a child). Remote Connect depends on an operative telematics device, a cellular connection, GPS signal strength and other factors outside of Toyota's control, which can limit system functionality and availability. Service may vary by vehicle and region. Registration and app download required. Terms of Use apply. Data charges may apply. Remote start/stop not available on manual-transmission-equipped vehicles. Services subject to change at any time without notice. See usage precautions and service limitations in *Owner's Manual* and at <https://www.toyota.com/connected-services/> for additional details. To learn about Toyota's data collection, use, sharing and retention practices, please visit <https://www.toyota.com/privacyvts/>. 16. Eligible vehicle and wireless service required. Coverage and service not available everywhere. Valid in the contiguous U.S. and Alaska. Do not drive distracted. Go to att.com/toyota for terms and conditions. Data usage and charges apply. Up to 5 devices can be supported using in-vehicle connectivity. Apps and services subject to change at any time without notice. 17. Destination Assist depends on an operative telematics device, a cellular connection, navigation map data and GPS signal strength and other factors outside of Toyota's control, which can limit system ability functionality or availability. Use common sense when relying on this information. Service may vary by vehicle and region. Registration required. Services subject to change at any time without notice. Terms of Use apply. See *Owner's Manual* and toyota.com/connected-services/ for additional limitations and details. To learn about Toyota's data collection, use, sharing and retention practices, please visit <https://www.toyota.com/privacyvts/>. 18. Apps and services are subject to change at any time without notice. Data charges may apply. Apple CarPlay® functionality requires a compatible iPhone® connected with an approved data cable into the USB media port. Apple CarPlay® is a registered trademark of Apple Inc. 19. iPhone® is a registered trademark of Apple Inc. All rights reserved. 20. Android is a trademark of Google LLC. 21. Vehicle user interface is a product of Google and its terms and privacy statement apply. To use Android Auto on your audio display, you'll need an Android Auto compatible vehicle and Android phone. For phone compatibility visit: <https://www.android.com/auto/>. Requires compatible smartphone connected with an approved data cable into the USB media port, and data plan rates apply. Apps and services vary by phone carrier and are subject to change at any time without notice. Android, Android Auto and Waze are trademarks of Google. 22. SiriusXM® audio services require a subscription sold separately by Sirius XM Radio Inc. If you decide to continue service after your trial, the subscription plan you choose will automatically renew thereafter and you will be charged according to your chosen payment method at then-current rates. Fees and taxes apply. To cancel, you must call SiriusXM at 1-866-635-2349. See SiriusXM Customer Agreement for complete terms at www.siriusxm.com. All fees and programming subject to change. Not all vehicles or devices are capable of receiving all services offered by SiriusXM. Current information and features may not be available in all locations, or on all receivers. ©2020 Sirius XM Radio Inc. SiriusXM and all related marks and logos are trademarks of Sirius XM Radio Inc. 23. SiriusXM All Access trial length and service availability may vary by model, model year or trim. 24. Amazon, Alexa and all related logos are trademarks of Amazon.com, Inc. or its affiliates. Certain functions require adequate signal strength and smartphone technology/connectivity. Not all Amazon Alexa functionality is available for in-vehicle use. See applicable app for details. Download of the Toyota+Alexa app is required to begin in-vehicle use of Alexa. Data charges may apply for certain functions. Apps, prices and services subject to change at any time without notice. To learn more, go to <https://www.toyota.com/audio-multimedia>. To learn more about Toyota's data collection, use, sharing and retention practices, please visit <https://www.toyota.com/privacyvts/>. 25. JBL® is a registered trademark of Harman International Industries, Inc. 26. Toyota Safety Sense™ effectiveness is dependent on many factors including road, weather and vehicle conditions. Drivers are responsible for their own safe driving. Always pay attention to your surroundings and drive safely. See *Owner's Manual* for additional limitations and details. 27. The Pre-Collision System (PCS) with Pedestrian Detection (PD) is designed to determine if impact is imminent and help reduce impact speed and damage in certain frontal collisions involving a vehicle or a pedestrian. PCS w/PD is not a substitute for safe and attentive driving. System effectiveness depends on many factors, such as speed, size and position of pedestrian and weather, light and road conditions. See *Owner's Manual* for additional limitations and details. 28. Dynamic Radar Cruise Control (DRCC) is designed to assist the driver and is not a substitute for safe and attentive driving practices. System effectiveness is dependent on many factors including road, weather and traffic conditions. See *Owner's Manual* for additional limitations and details. 29. Lane Departure Alert with Sway Warning System is designed to read visible lane markers under certain conditions, and provide visual and audible alerts when it detects a pattern of vehicle movement that might indicate driver inattention or drowsiness. It is not a collision-avoidance system or a substitute for safe and attentive driving. Effectiveness is dependent on many factors including road, weather and vehicle conditions. See *Owner's Manual* for additional limitations and details. 30. Automatic High Beams operate at speeds above 25 mph. Factors such as a dirty windshield, weather, lighting and terrain limit effectiveness, requiring the driver to manually operate the high beams. See *Owner's Manual* for additional limitations and details. 31. 2021 EPA-estimated mileage. Use for comparison purposes only. Your mileage will vary for many reasons, including your vehicle's condition and how/where you drive. 32. The backup camera does not provide a comprehensive view of the rear area of the vehicle and you should also look around the vehicle, using mirrors to confirm rearward clearance. Environmental conditions may limit effectiveness and view may become obscured. See *Owner's Manual* for additional limitations and details. 33. The Bluetooth® word mark and logos are registered trademarks owned by Bluetooth SIG, Inc., and any use of such marks by Toyota is under license. A compatible Bluetooth®-enabled phone must first be paired. Phone performance depends on software, coverage and carrier. 34. May not be compatible with all mobile phones, MP3/WMA players and like models. 35. Standard on Limited, Platinum, 1794 Edition and TRD Pro grades; available on SR and SR5 grades. 36. HD Radio™ Technology manufactured under license from iBiquity Digital Corporation U.S. and Foreign Patents. HD Radio™ and the HD, HD Radio, and "Arc" logos are proprietary trademarks of iBiquity Digital Corp. 37. Dynamic Navigation depends on an operative telematics device, a cellular connection, navigation map data and GPS signal strength, and other factors outside of Toyota's control, which can limit system functionality or availability. Services not available in every city or roadway. Use common sense when relying on information provided. Service may vary by vehicle and region. Registration is required. Terms of Use apply. See *Owner's Manual* and <https://toyota.com/connected-services/> for additional limitations and details. To learn about Toyota's data collection, use, sharing and retention practices, please visit <https://www.toyota.com/privacyvts/>. 38. The Smart Key System may interfere with some pacemakers or cardiac defibrillators. If you have one of these medical devices, please talk to your doctor to see if you should deactivate this system. 39. Do not rely exclusively on the Blind Spot Monitor. Always look over your shoulder and use your turn signal. There are limitations to the function, detection and range of the monitor. See *Owner's Manual* for additional limitations and details. 40. Do not rely exclusively on the Rear Cross-Traffic Alert system. Always look over your shoulder and use your mirrors to confirm rear clearance. There are limitations to the function, detection and range of the system. See *Owner's Manual* for additional limitations and details. 41. Front and rear parking assist sonar is designed to warn drivers of potential front and rear collisions at speeds of 6 mph or less. Certain vehicle and environmental factors, including an object's shape and composition, may affect the ability of the front and rear parking assist sonar to detect it. Always look around outside the vehicle and use mirrors to confirm clearance. See *Owner's Manual* for additional limitations and details. 42. Integrated Trailer Brake Controller is an electronic system that operates in tandem with a trailer equipped with an electric braking system. It is designed to help the driver maintain trailer control by increasing or reducing trailer braking based on trailer weight. It is not a substitute for safe towing practices. Factors including speed, weather, road conditions and driver input can all affect trailer braking control. See *Owner's Manual* for additional limitations and details. 43. Extra-cost color. 44. Toyota strives to build vehicles to match customer interest and thus they typically are built with popular options and option packages. Not all options/packages are available separately and some may not be available in all regions of the country. See toyota.com for information about options/packages commonly available in your area. If you would prefer a vehicle without any or with different options, contact your dealer to check for current availability or the possibility of placing a special order. Color(s) depicted may vary based on multiple factors, including ambient lighting and the format in which it is being viewed (e.g., computer, mobile device or print). 45. Do not rely exclusively on the blind-spot mirror. Always look over your shoulder and use your turn signal. There are limitations to the function of the mirror. See *Owner's Manual* for additional limitations and details. 46. Bilstein® is a registered trademark of ThyssenKrupp Bilstein GmbH FED REP GERMANY. 47. The Tire Pressure

DISCLOSURES

Monitor System alerts the driver when tire pressure is critically low. For optimal tire wear and performance, tire pressure should be checked regularly with a gauge; do not rely solely on the monitor system. See *Owner's Manual* for additional limitations and details. **48.** HomeLink® and the HomeLink® house icon are registered trademarks of Gentex Corporation. **49.** Advanced voice recognition capabilities vary by head unit. **50.** The Safety Connect® trial period is at no extra cost and begins on the original date of purchase or lease of a new vehicle. After the trial period expires, enrollment in paid subscription is required to access the service. **51.** The Wi-Fi Connect trial begins at the time of activation and expires when 2GB of data is used or when the 3-month period ends. After the trial period expires, enrollment in a paid subscription is required to access the service. Terms and conditions apply. **52.** The Service Connect trial period is at no extra cost and begins on the original date of purchase or lease of a new vehicle. After the respective trial period expires, enrollment in paid subscription is required to access the service. **53.** The Remote Connect trial period is at no extra cost and begins on the original date of purchase or lease of a new vehicle. After the trial period expires, enrollment in a paid subscription is required to access the service. Terms and conditions apply. **54.** The Dynamic Navigation three-year trial period begins on the original date of purchase or lease of a new vehicle. After the trial period expires, enrollment in paid subscription is required to access the service. **55.** Dynamic voice recognition capabilities vary by head unit. **56.** The Destination Assist trial period is at no extra cost and begins on the original date of purchase or lease of a new vehicle. After the trial period expires, enrollment in a paid subscription is required to access the service. **57.** Vehicle Stability Control is an electronic system designed to help the driver maintain vehicle control under adverse conditions. It is not a substitute for safe and attentive driving practices. Factors including speed, road conditions, weather and driver steering input can all affect whether VSC will be effective in preventing a loss of control. See *Owner's Manual* for additional limitations and details. **58.** Brake Assist is designed to help the driver take advantage of ABS and is not a substitute for safe driving practices. Braking effectiveness also depends on proper vehicle maintenance, tire and road conditions. See *Owner's Manual* for additional limitations and details. **59.** Smart Stop Technology® operates only in the event of certain contemporaneous brake and accelerator pedal applications. When engaged, the system will reduce power to help the brakes bring the vehicle to a stop. Factors including speed, road conditions and driver input can all impact stopping distance. Smart Stop Technology® is not a substitute for safe and attentive driving and does not guarantee instant stopping. See *Owner's Manual* for additional limitations and details. **60.** Airbag systems are Supplemental Restraint Systems and are designed to inflate only under certain conditions and in certain types of severe collisions. To decrease the risk of injury from an inflating airbag, always wear seatbelts and sit upright in the middle of the seat as far back as possible. Do not put objects in front of an airbag or around the seatback. Do not use a rearward-facing child seat in any front passenger seat. See *Owner's Manual* for additional limitations and details. **61.** Trailer-Sway Control (TSC) is an electronic system designed to help the driver maintain vehicle control under adverse conditions. It is not a substitute for safe driving practices. Factors including speed, road conditions, weather and driver steering input can all affect whether TSC will be effective in preventing a loss of control. See *Owner's Manual* for additional limitations and details. **62.** The engine immobilizer is a state-of-the-art anti-theft system that is initiated when you insert your key into the ignition switch or bring a Smart Key fob into the vehicle. The engine will only start if the code in the transponder chip inside the key/fob matches the code in the vehicle's immobilizer. The transponder chip is embedded in the key/fob and can be costly to replace. If you lose a key or fob, your Toyota dealer can help or go to www.aloa.org to find a qualified locksmith in your area who can perform high-security key service. **63.** Available only for vehicles equipped with factory security and factory remote keyless entry system or Smart Key System. **64.** ToyotaCare covers normal factory scheduled maintenance for two years or 25,000 miles, whichever comes first. Certain models require a different maintenance schedule as described in their Maintenance Guide. 24-hour Roadside Assistance is also included for two years, unlimited mileage. Roadside Assistance does not include parts and fluids, except emergency fuel delivery. See Toyota dealer for details and exclusions. Valid only in the continental U.S.

Toyota strives to build vehicles to match customer interest and thus they typically are built with popular options and option packages. Not all options/packages are available separately and some may not be available in all regions of the country. See toyota.com for information about options/packages commonly available in your area. If you would prefer a vehicle without any or with different options, contact your dealer to check for current availability or the possibility of placing a special order.

Color(s) depicted may vary based on multiple factors, including ambient lighting and the format in which it is being viewed (e.g., computer, mobile device or print).

Some vehicles are shown with available equipment. Seatbelts should be worn at all times. For details on vehicle specifications, standard features and available equipment in your area, contact your Toyota dealer. A vehicle with particular equipment may not be available at the dealership. Ask your Toyota dealer to help locate a specifically equipped vehicle.

Toyota Tundra is designed to meet most off-road driving requirements. Abusive use may result in bodily harm or damage. Toyota encourages responsible operation to protect you, your vehicle and the environment. Seatbelts should be worn at all times. Please do not allow passengers to ride in the cargo area. Towing hitch receiver/ball mount kits are not intended to provide crash protection. For details on vehicle specifications, standard features and available equipment in your area, contact your Toyota dealer. A vehicle with particular equipment may not be available at the dealership. Ask your Toyota dealer to help locate a specifically equipped vehicle.

All information presented herein is based on data available at the time of posting, is subject to change without notice and pertains specifically to mainland U.S.A. vehicles only. Vehicles shown may be prototypes, shown using visual effects and/or shown with options. Actual models may vary.



For Toyota Mobility program details, go to www.toyota.com/mobility or call the Toyota Brand Engagement Center at 1-800-331-4331